

Microsoft Operations Management Suite

Quick start guide

Onboarding steps

Microsoft Operations Management Suite (OMS) enables you to onboard in minutes.

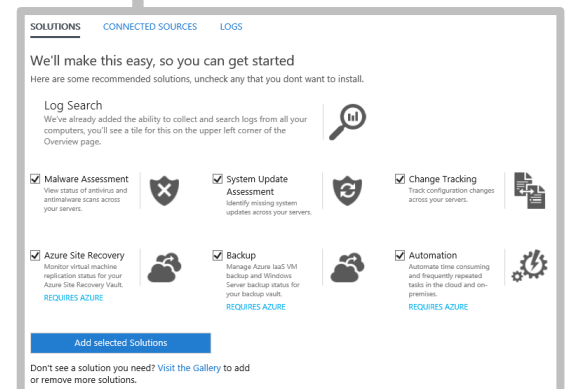
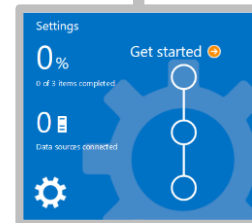
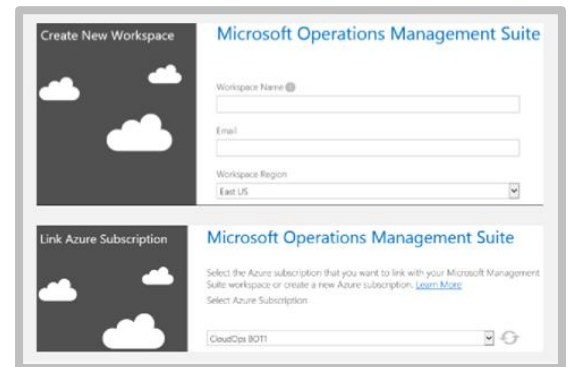
Sign up in 3 clicks

1. Navigate to <http://microsoft.com/oms> and click the **Try for free** button. Sign in with your **Microsoft account** such as Outlook.com, or with an **Organizational account** provided by your company or educational institution to use with Office 365 or other Microsoft services.
2. Provide a unique **Workspace Name**. A workspace is a logical container where your management data is stored. It provides you a way to partition data between different teams in your organization, as the data is exclusive to its workspace. Specify an **email** address and the **region** where you would like to have your data reside.
3. Next, you can create a new Azure subscription or link to an existing Azure subscription. If you would like to proceed using the **free trial** without creating Azure subscription, click the **Not Now** button.

Get started with the OMS portal

To choose solutions and connect the servers you intend to manage, click on the blue **Get Started** tile and follow the steps below:

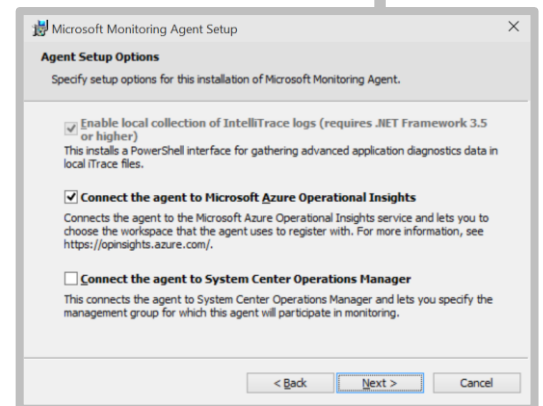
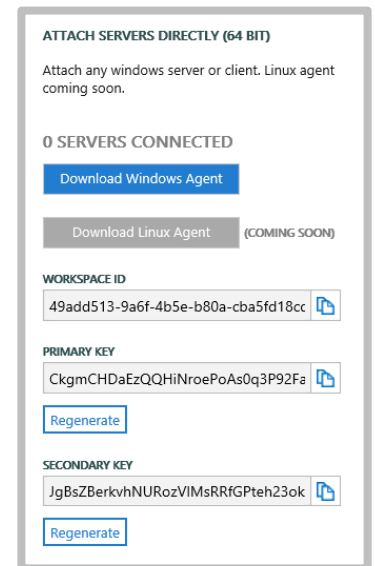
- Select the solutions you would like to use and click the **Add selected solutions** button.
- Choose how you would like to connect to your environment:
 - a. Connect any Windows or Linux Server or client directly by installing an agent.
 - b. Use System Center Operations Manager to attach your management groups or your entire Operations Manager deployment.
 - c. Use an Azure storage account configured with the Windows or Linux Azure diagnostic VM extension.
- Finally, configure at least one log to populate your data. You can select the IIS logs and/or add event logs and select **Save** at the bottom of the page. For event logs, you can specify the type of messages (i.e., error/warning/information) to monitor.



Connect servers directly to OMS by installing an agent

- In the **Get Started** view, click the **Connect a data source** node and click the **Download Windows Agent** button. The agent can only be installed on Windows Server 2008 SP1 or above or Windows 7 SP1 or above. Servers need to be x64 architecture.
- Install the agent on one or more servers. You can install agents, one by one or in-bulk, using a custom [script](#) or your existing software distribution solution.
- After agreeing to the license agreement and choosing your install folder, select the **Connect the agent to Microsoft Azure Operational Insights** checkbox.
- In the next screen you will be asked for your Operational Insights workspace ID and workspace key. Your workspace ID and key can be found in the screen where you download the agent file.
- In the installer screen you can click the **Advanced** button to optionally set up your proxy server and provide authentication information. Click the **Next** button to return to the workspace information screen.
- Click the **Next** button to validate your workspace ID and key. If any errors are found, you can click the **Back** button to make corrections. Once your workspace ID and key are validated, click **Install** to complete the agent installation.

Log back onto your OMS portal and click the **Server & Usage** tile on the overview page. A green checkmark icon will appear once the agents communicate with the service (initially this takes 5-10 minutes). Note: The capacity management and configuration assessment solutions are not currently supported by servers connected directly to OMS.



OMS also enables you to connect to your System Center 2012 Operations Manager (SCOM) SP1 and R2 environments, sending data to the service without requiring additional hardware or load on your management groups. This supports the use of existing Operations Manager agents directly.

Connect using System Center Operations Manager

- In the Operations Manager console, select **Administration**.
- Expand the **Operational Insights** node and select **Operational Insights Connection**.
- Click the **Register to Operational Insights** link towards the top right and follow the onscreen instructions.
- After completing the registration wizard, click **Add a Computer/Group** link.
- In the **Computer Search** dialog box you can search for computers or groups monitored by Operations Manager. Select computers or groups to onboard to Operational Insights, click **Add**, and then click **OK**. You can confirm that the service is receiving data by clicking the **Server & Usage** tile in the OMS portal. Data should appear in 5-10 minutes.

Analyze data from cloud services in Microsoft Azure

With OMS you can quickly search event and IIS logs for cloud services and virtual machines by enabling diagnostics for Azure Cloud Services. You can also receive additional insights for your Azure virtual machines by installing the Microsoft Monitoring Agent. Details on how to configure your Azure environment to leverage OMS can be found [here](#).